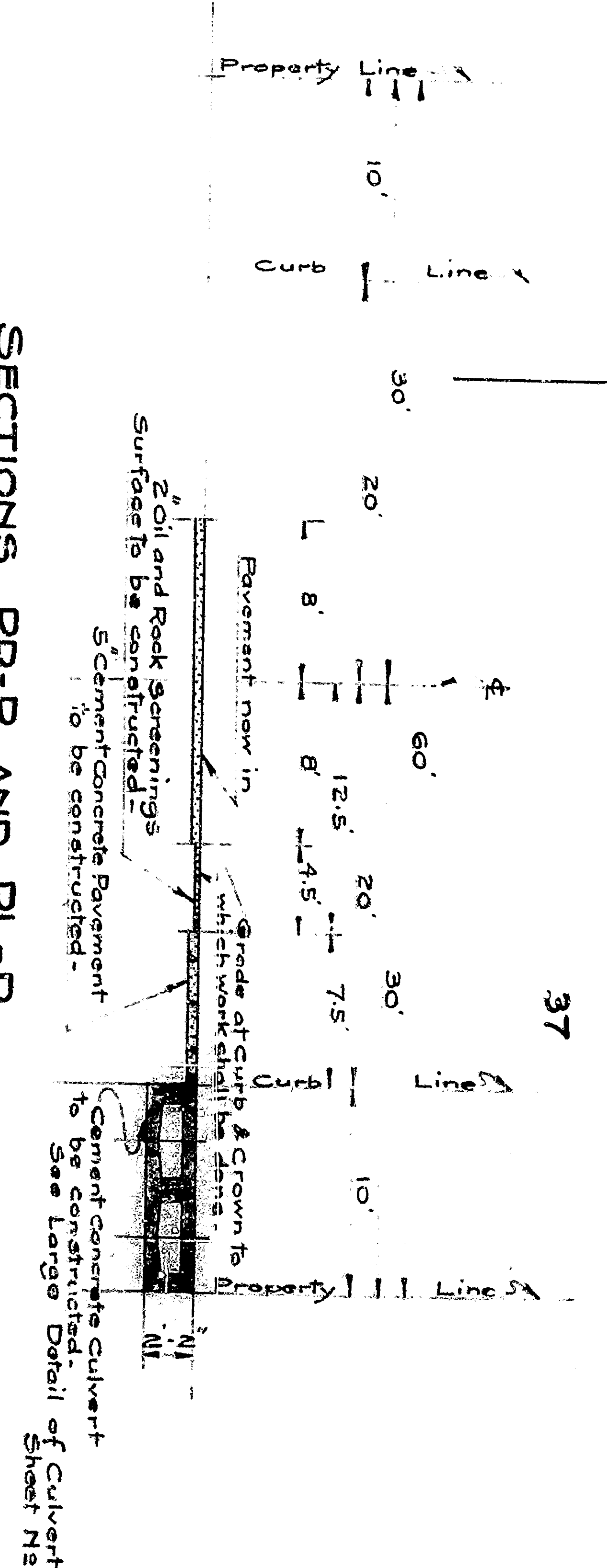
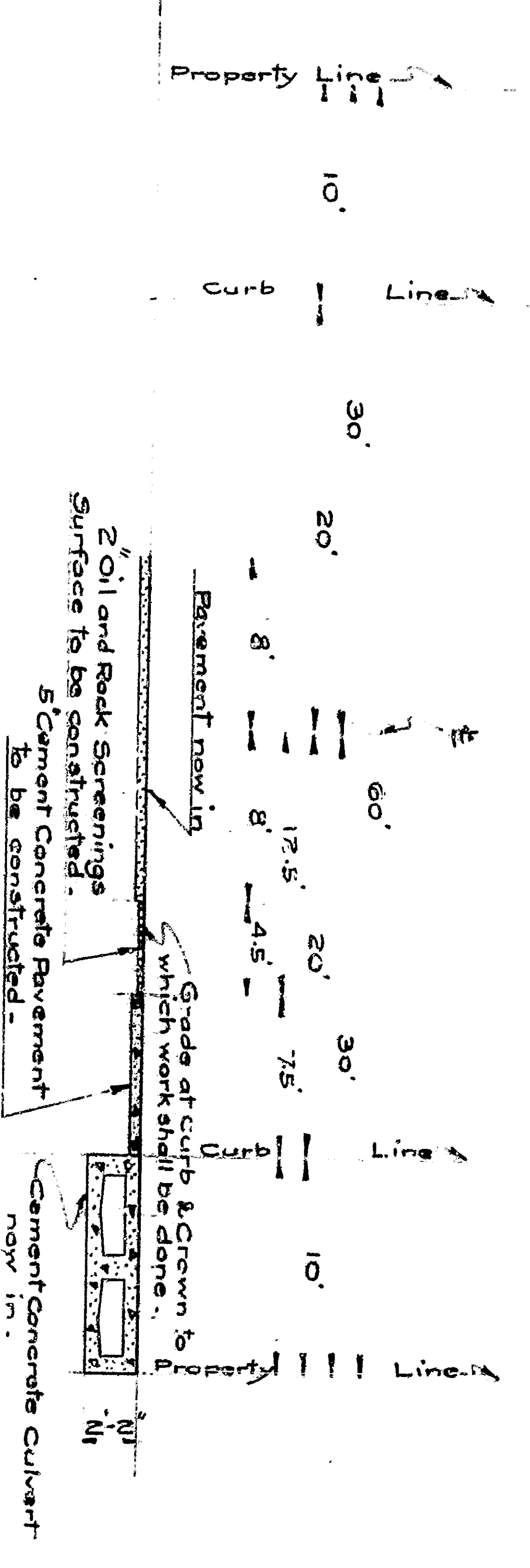


SECTIONS PR-P AND PL-P
SECTION PR-P IS AS SHOWN
SECTION PL-P IS REVERSED
Scale 1" = 8'

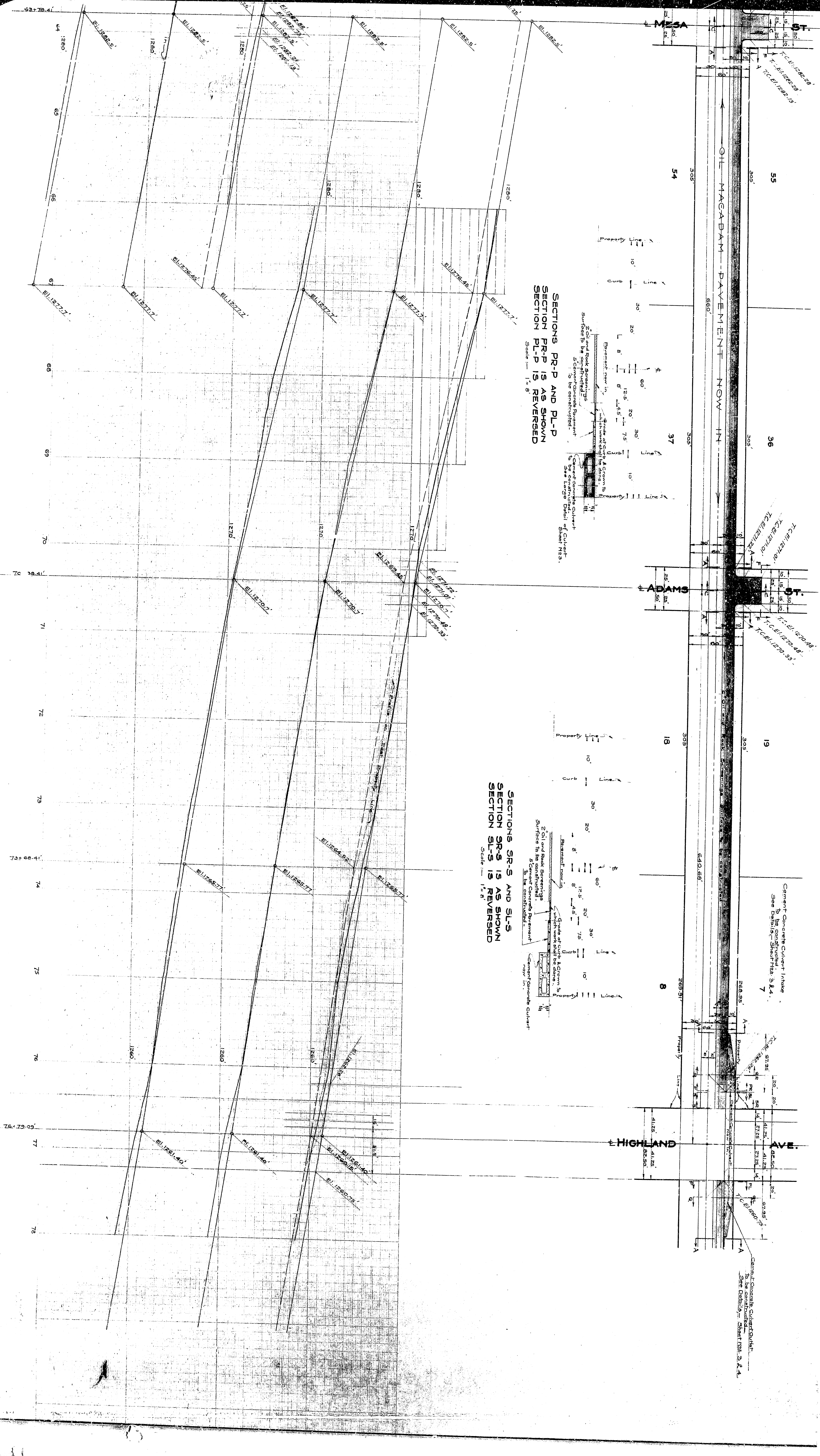


SECTIONS SR-S AND SL-S
SECTION SR-S IS AS SHOWN
SECTION SL-S IS REVERSED
Scale 1" = 8'



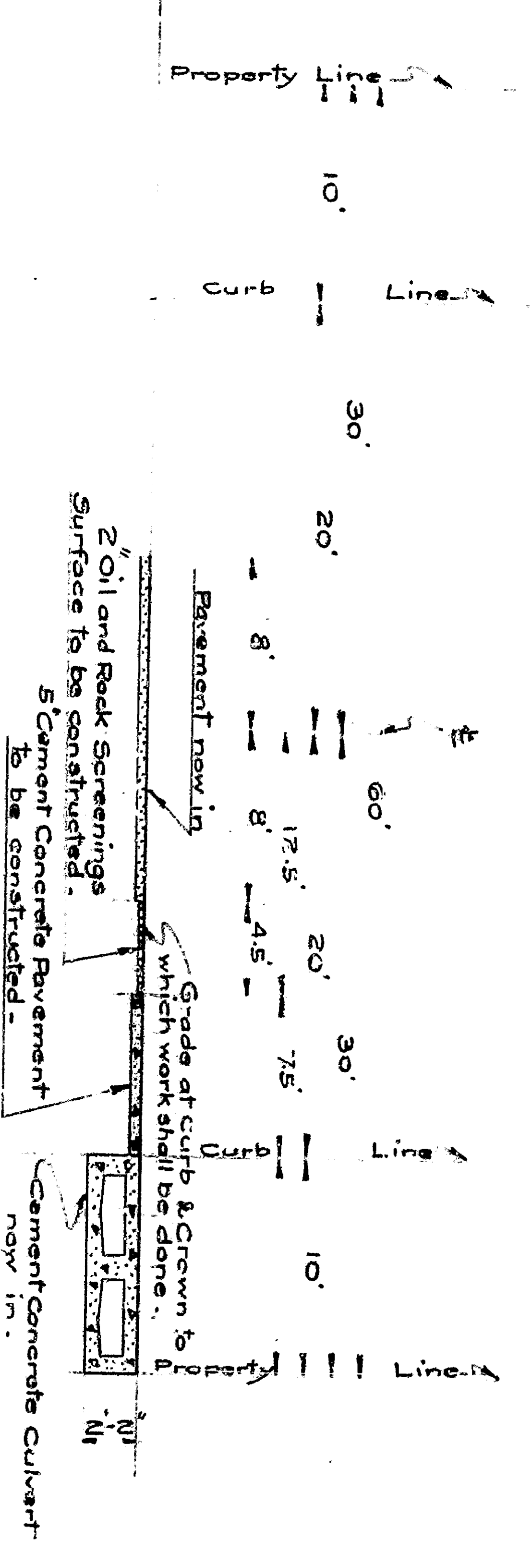
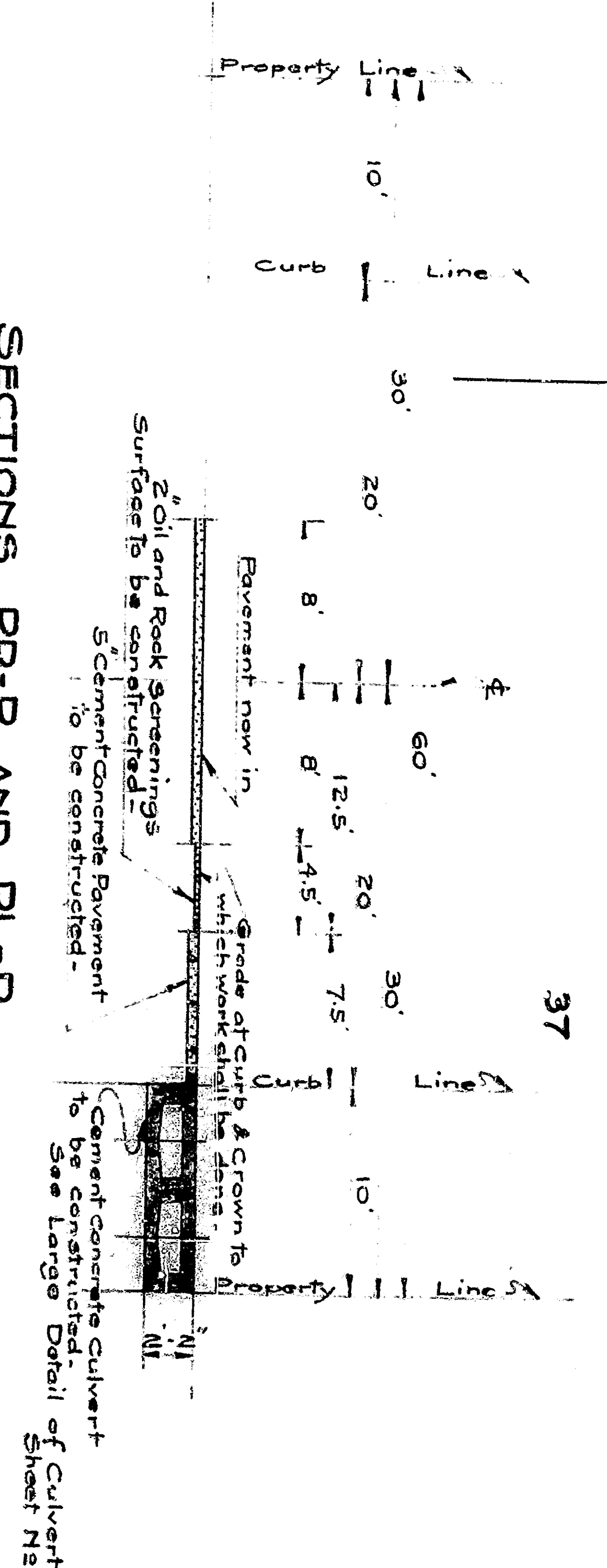
Cement Concrete Culvert Inlet
To be constructed
See Specifications Sheet Nos. 3 & 4.

Cement Concrete Culvert Inlet
To be constructed
See Specifications Sheet Nos. 3 & 4.



SECTIONS PR-P AND PL-P
SECTION PR-P IS AS SHOWN
SECTION PL-P IS REVERSED
Scale 1" = 8'

SECTIONS SR-S AND SL-S
SECTION SR-S IS AS SHOWN
SECTION SL-S IS REVERSED
Scale 1" = 8'



Cement Concrete Culvert Inlet
to be constructed
See Sheet N23 - Sheet N24, S & L.

Cement Concrete Culvert Inlet
to be constructed
See Sheet N23 - Sheet N24, S & L.